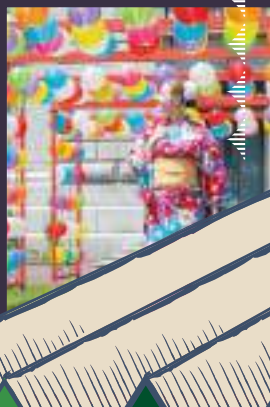


OTARU SAKAIMACHI

Discover Taisho Romanticism



小樽堺町観光地図



Otaru Sakaimachidori Shopping Street

Retro and stylish main street of Otaru sightseeing

Otaru Sakaimachi Tourist MAP

Welcome to Otaru Sakaimachi Street!

Legend

- Food
- Shopping
- Tourist Information Center
- Photo Spots
- Post Office
- Toilet
- Parking Lot
- Nursing Room
- Historic Building
- Commemorative Stamp Locations
- Hotel
- Bus Stop
- Gas Station
- Evacuation Center

Map Labels: Otaru Port, Pier No.3, Cruise Ship Dock, Otaru International Information Center, Port Marche Otarue, Asakusa Bridge, Tourist Information Center, House of Western Art, Otaru Denuki-koji, Nikka Bar Rita, Otaru Bine, Canal Terminal Store, Otaru Canal Terminal, Obobachi River, Lawson Sakaimachi Store, Sakaimachi shopping street, Emergency Evacuation Route, Former Mitsui Bank Otaru Branch, Otaru Art Base, Stained Glass Museum, Rikshaw Ebisuya, Shimatani Cafe, Museum of Art, Nitori, Otaru Post Office, Wine & Cafe Restaurant Otaru Bine, Otaru Museum of Literature & Art, The Bank of Japan Otaru Museum (Museum of Finance), OMO5 Otaru, UNWIND HOTEL & BAR OTARU, Former Temiya Railway, Otaru Japanese Confectionary Yuuka, MYRIAD Wine Shop, Shibuya Kenseisu Co., Ltd, Chuodori Street, JR Otaru Station, Evacuation Center (Marine Hall), Former Canal Plaza, Otaru Museum Annex, Family Mart Ironai 1 Chome Store, December 3rd Canal Store, Otaru Sakaimachidori Shopping Street, Promotion Association, 6-11 Sakaimachi, Otaru, Hokkaido 047-0027, TEL 0134-27-1133 FAX 0134-22-0477, https://otaru-sakaimachi.com

Otaru Sakaimachidori Shopping Street Promotion Association
 6-11 Sakaimachi, Otaru, Hokkaido 047-0027
 TEL 0134-27-1133 FAX 0134-22-0477
<https://otaru-sakaimachi.com>

JR Otaru Station
 15-minute walk from Sakaimachidori Street



Otaru Sakaimachi Parking Lot

Business Hours 9:00~19:00 ※ Closed in winter
 300 yen per hour, Maximum daily charge is 1,000 yen
 ※ Same rates for weekends and holidays
 ※ Approx. 80 parking spaces

Free Wi-Fi

.OTARU Free Wi-Fi
 Free outdoor Wi-Fi available inside [red box] area
 ※ Please note internet access may not be available indoors and/or depending on the store's location.

Legend

- Food
- Tourist Information Center
- Photo Spots
- Post Office
- Toilet
- Parking Lot
- Nursing Room
- Evacuation Center
- Shopping
- Historic Building
- Commemorative Stamp Locations
- Hotel
- Bus Stop
- Gas Station

Street Lamps are Numbered



TEL.0134-27-1133
 Business Hours 9:00~18:00 (open all year round)

Free Wi-Fi/Free Umbrella Rentals/Free Wheelchair Rentals/Free Baby Stroller Rentals/Commemorative Stamp/Postcards/Luggage Storage

@otarusakaimachidori
 @otarusakaimachi_jp
 @sakaimachiotaru

Go to the Sakaimachidori Shopping Street website for more information!

